



**CisoLube**  
LUBRICATION SYSTEM

SOLVE YOUR NEEDS WITH SERVICES

# LubeStar Electric Pump



2025 V1.1

LUBESTAR  
ELECTRIC PUMP

[www.cisolube.com](http://www.cisolube.com)  
Yantai CISO Lubrication Technology Co.,Ltd  
Tel:+86 400-800-9400

## LubeStar High Performance Electric Pump

Compact and versatile, it has a unique rotary drive and modular gear configuration, allowing you to adjust the output speed of the pump motor to suit your different applications.

Lubestar pumps can be connected to 12/24 V DC, and the motion generated by the motor rotation is converted into reciprocating motion of the pump, providing efficient lubricant flow. The use of efficient brushless motors, high torque output, low noise, can ensure the pump stable output of lubricant at high pressure.

The higher displacement is particularly suitable for single line lubrication systems or dual-line lubrication systems.

Therefore, the pump is very compact and can be installed almost anywhere.



### Features

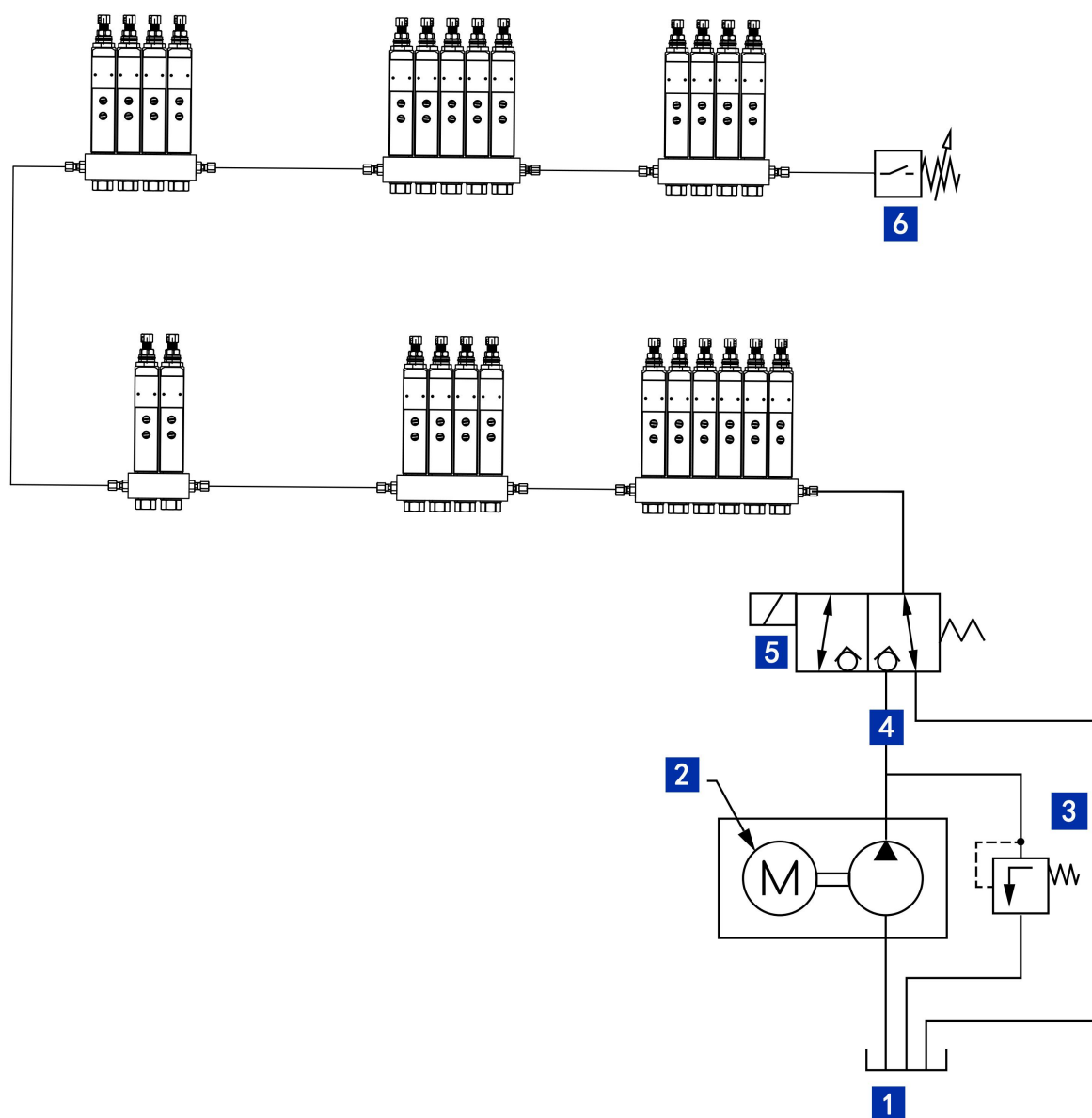
- Brushless DC motor
- Various sizes available
- Temperature and overload protection, durable.
- Stable pressure, smooth output
- Protection level: IP65
- Suitable for medium and large lubrication systems

### Applications

- Construction machinery
- Mining machinery and mining vehicles
- Metallurgy
- Steel mills
- Paper mills
- Food and beverages
- .....

Technical Data	
Functional principle	Electric piston pump
No. of output Port	1
Adjustable flowrate	Max. 103 cm <sup>3</sup> /min
Max. operating pressure	Max. 345Bar
Operating temperature	-40°C ~ 65°C
Valve	24VDC
Maximum current	9.6A
Tank capacity	27、41、55 kg
Output Port	1/4NPTF
Ratio	19:1
Rated Power	200W
Installation Method	vertical
Material	Fluororubber, polyurethane, steel, aluminum_x0002_zinc castings
Solenoid valve Data	
Maximum flow capacity	7gpm (26.5L/min)
Maximum working pressure	350bar
Switching frequency (max)	15000 cyc/h
Installation torque	20~25 lbf ft (27~34 N-m)
Viscosity Range	2.8~380cSt
Rated response time	50ms

## Electric schematic diagram



1 Tank

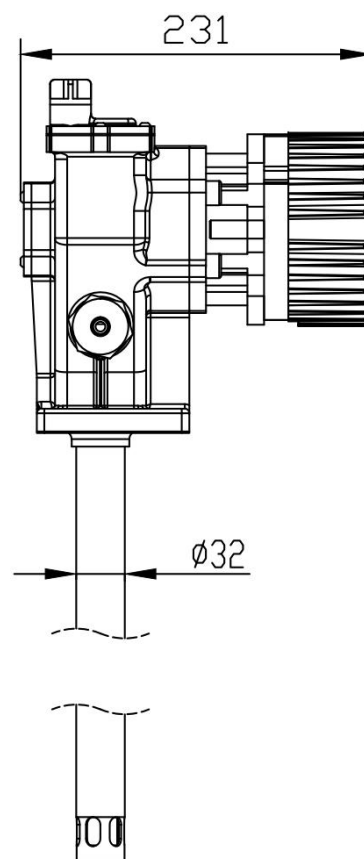
4 Lubricant outlet

2 Electric motor

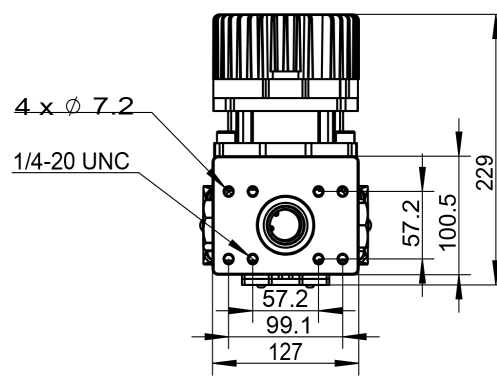
5 Solenoid valve

3 Safety valve

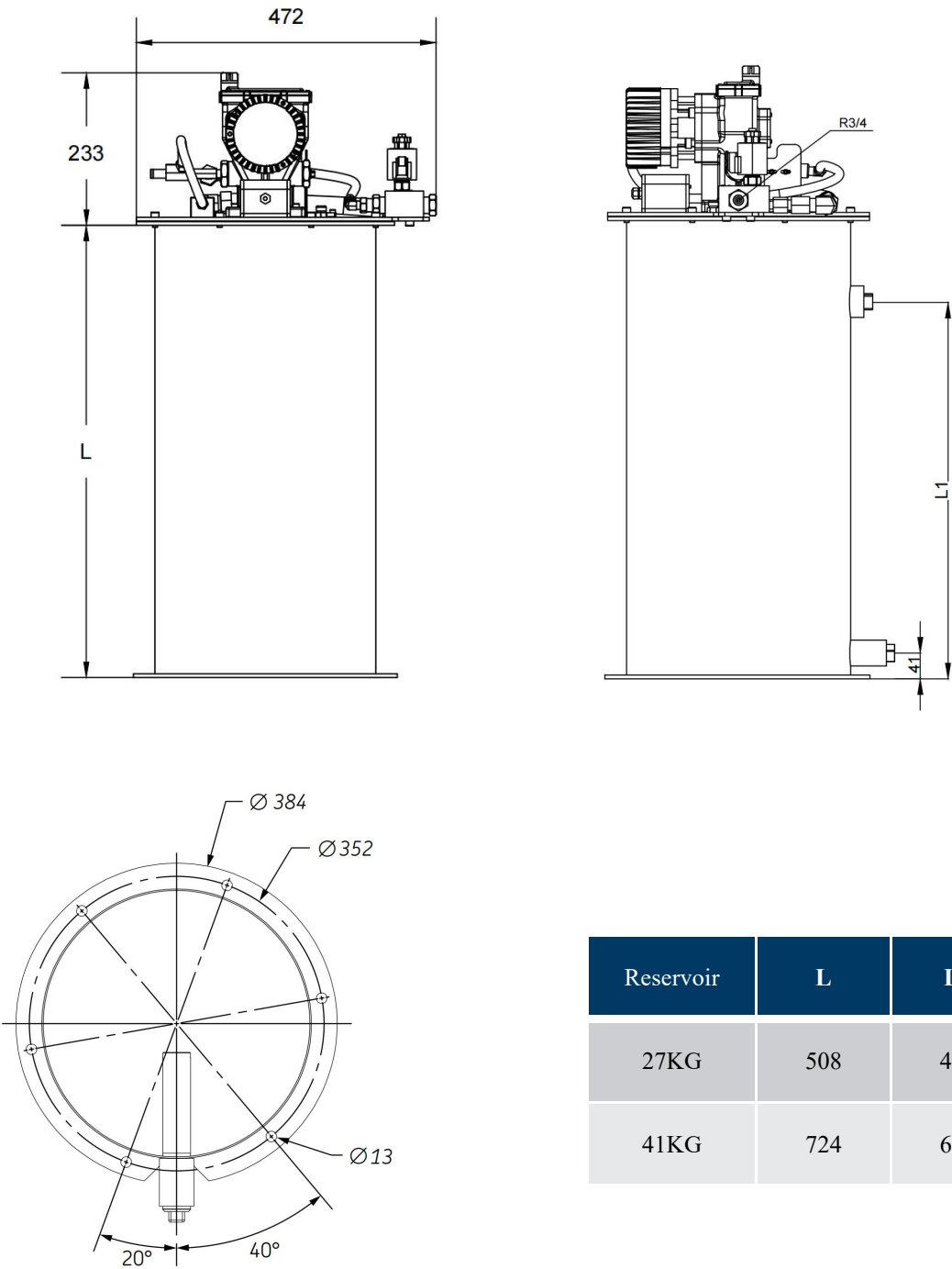
6 Terminal pressure switch



Reservoir	L
16KG	348
27KG	483
41KG/55KG	699
180KG	864

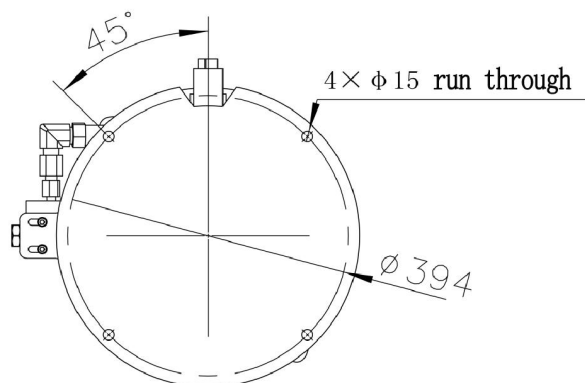
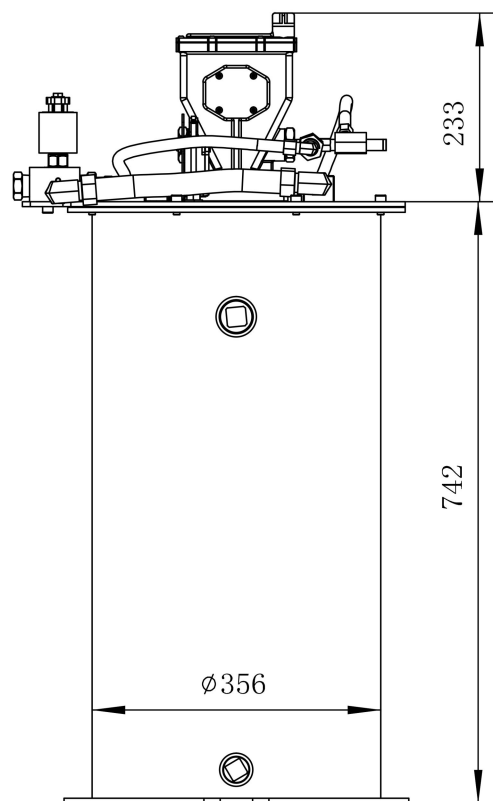


Dimension with tank



Reservoir	L	L1
27KG	508	430
41KG	724	646

55KG





## Ordering information:

Model	Description	Voltage	Reservoir	Ratio	Max. operating pressure
ELS479	Pump	24V	16KG	19:1*	170bar
ELS728	Pump and reservoir, with follower plate and low level	24V	27KG	19:1	345bar
ELS729	Pump and reservoir, with follower plate and low level	24V	41KG	19:1	345bar
ELS730	Pump and reservoir, with follower plate and low level	24V	55KG	19:1	345bar
ELS736	Pump	24V	16KG	19:1	345bar
ELS737	Pump	24V	27KG	19:1	345bar
ELS738	Pump	24V	41/55KG	19:1	345bar
ELS739	Pump	24V	180KG	19:1*	170bar

\* For larger displacement lubrication pumps, please contact your sales manager.



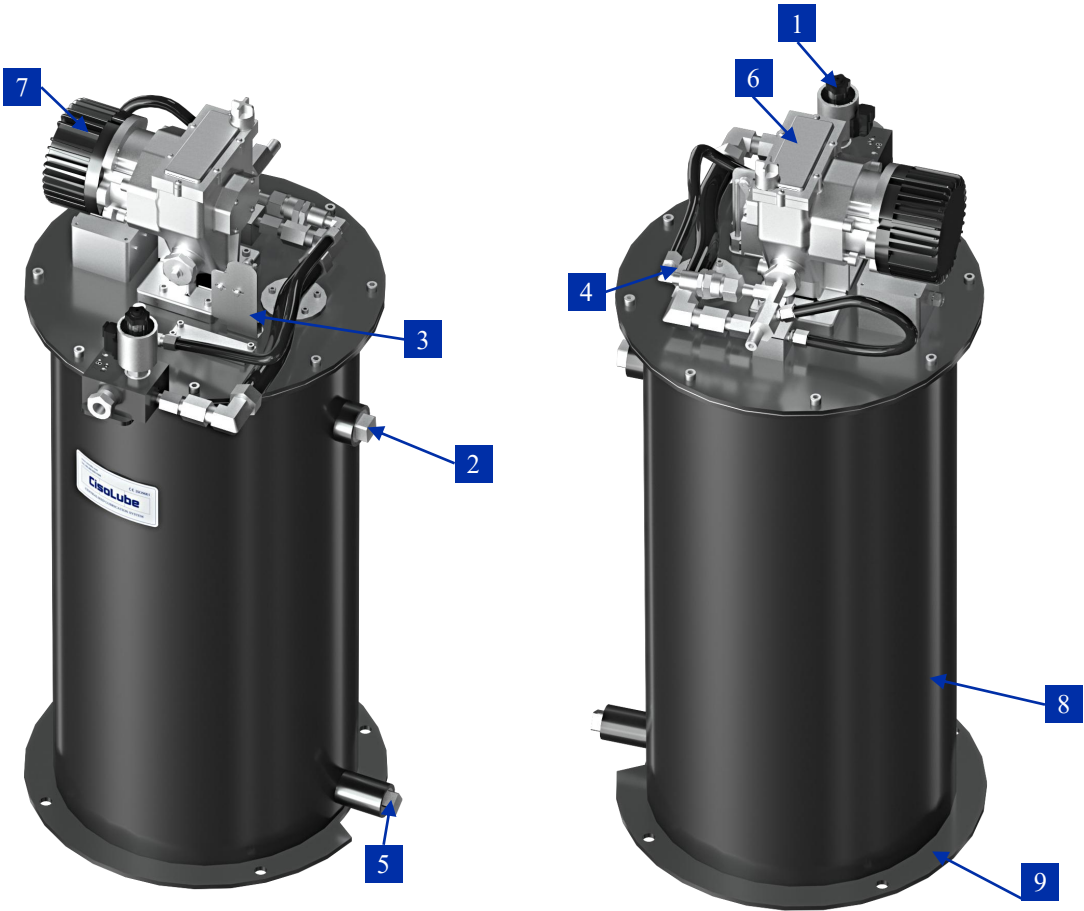
Pump



Pump and Reservoir



Product components



1	Safety valve	4	Vent port	7	Motor
2	Overflow port	5	Grease filling port	8	Pump tank
3	Low leve	6	Pump body	9	Fixed plate

## Tank



## Part №

## KG

## Description

LS0027

27

Tank kits

LS0041

41

Tank kits

LS0055

55

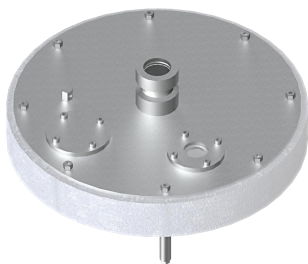
Tank kits

Drum cover is supplied with bolts, vent cap, gasket and eyebolts.

Tank assembly ordering code includes complete drum cover.

Level sensor and follower plate must be ordered separately.

## Follower plate



## Part №

## KG

LS1041

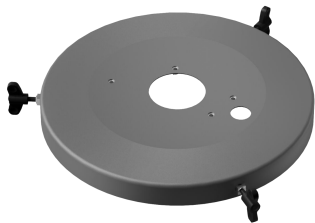
27/41

LS1055

55

## Cover, Follower plate assembly

## 16KG Cover assembly



## 16KG Follower plate assembly



## Part №

## KG

## Description

LS0016

16

Cover assembly

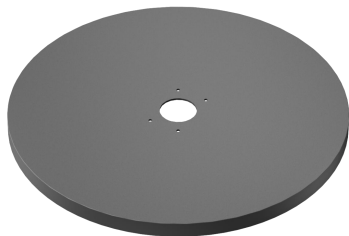
LS1004

16

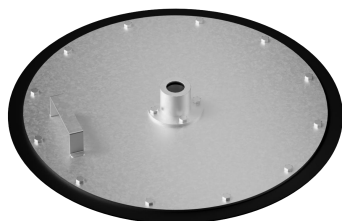
Follower plate assembly

### Cover, Follower plate assembly

180KG Cover assembly

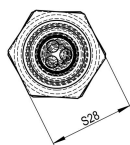
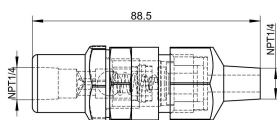


180KG Follower plate assembly



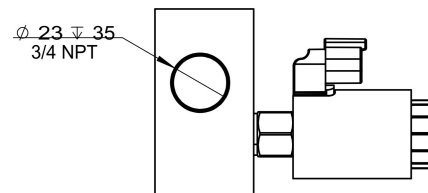
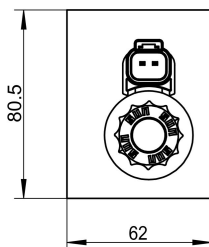
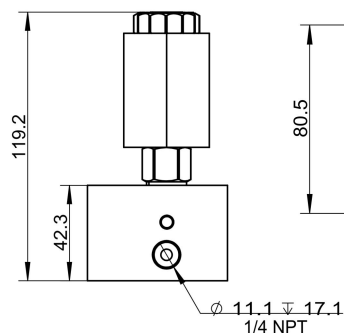
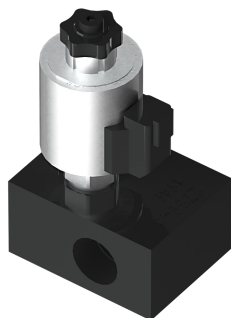
Part №	KG	Description
LS0180	180	Cover assembly
LS1008	180	Follower plate assembly

### Outlet check valve assembly



Part №	Thread
LS1005	NPT1/4

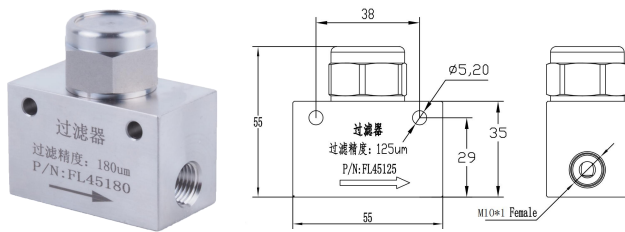
### Solenoid release valve



Part №	Thread
LS1001	NPT3/4

# LUBESTAR High performance electric pump

## Filter



### Part №

### Accuracy

### Thread

FL45180

180µm

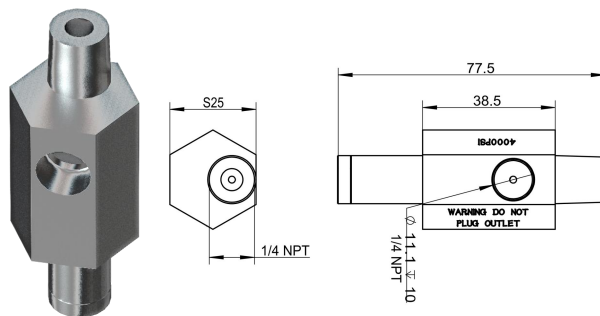
M10\*1

FL45125

125µm

M10\*1

## Safety valve



### Part №

### Thread

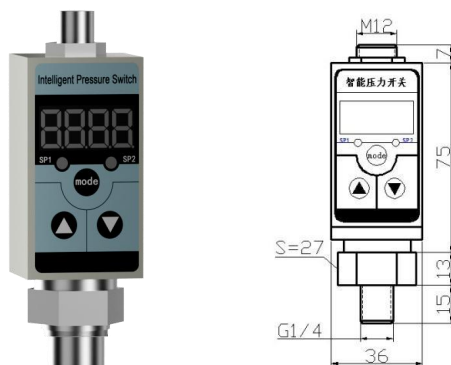
### Description

5FI10

NPT1/4

275bar/4000psi

## Pressure switch



### Part №

### Thread

EPW-S1

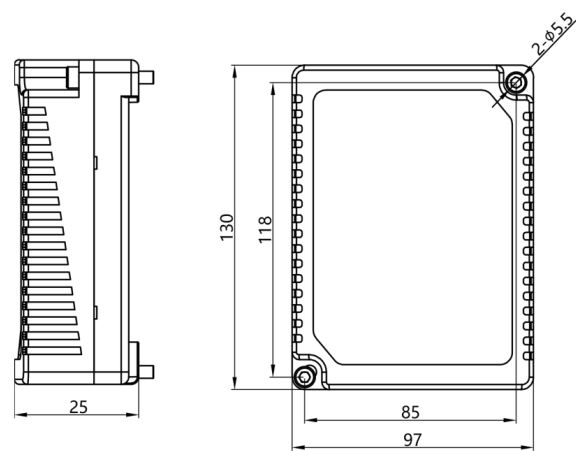
G1/4

Controller	Part №
	MC-II-A

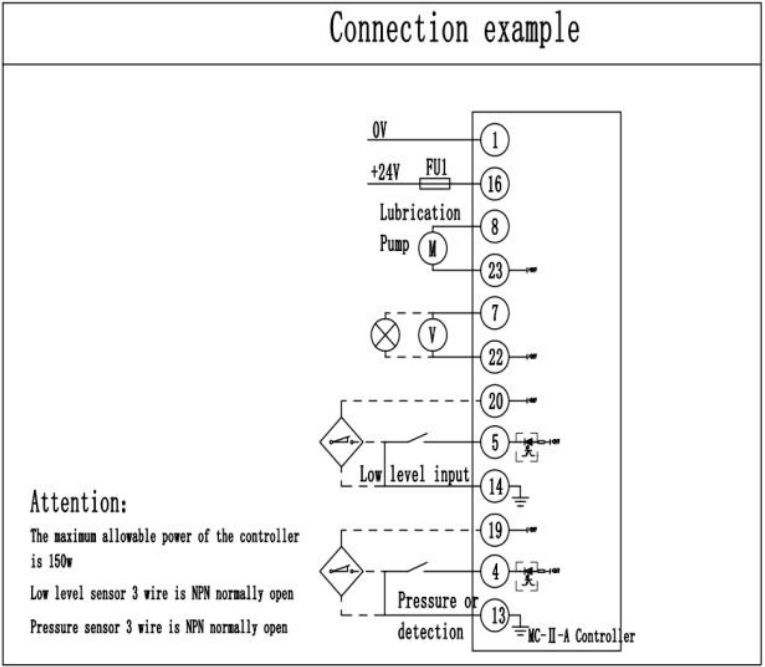
wiring



Controller Plug	Pin Function Description		
	16	+24V	Power Supply +
	1	0V	Power Supply -
	23		Motor +
	8		Motor -
	22		Electromagnetic valve + / lubrication indicator +
	7		Electromagnetic Valve - / lubrication Indicator -
	20		Low-level power +
	5		Low-level signal
	14		Low-level power -
	19		Sensor power +
	4		Sensor signal
	13		Sensor power -



Connection example



# CISO

LUBRICATION SYSTEM

**Yantai CISO Lubrication Technology Co.,Ltd**

No. 41, Bosina Road, High-tech Zone, Yantai City, Shandong Province, CHINA

Tel: +86 400-800-9400



MADE IN CHINA



[www.cisolube.com](http://www.cisolube.com)